

SANDHILL CRANE WETLANDS



*Water Resource
Restoration Sponsor
Program &*



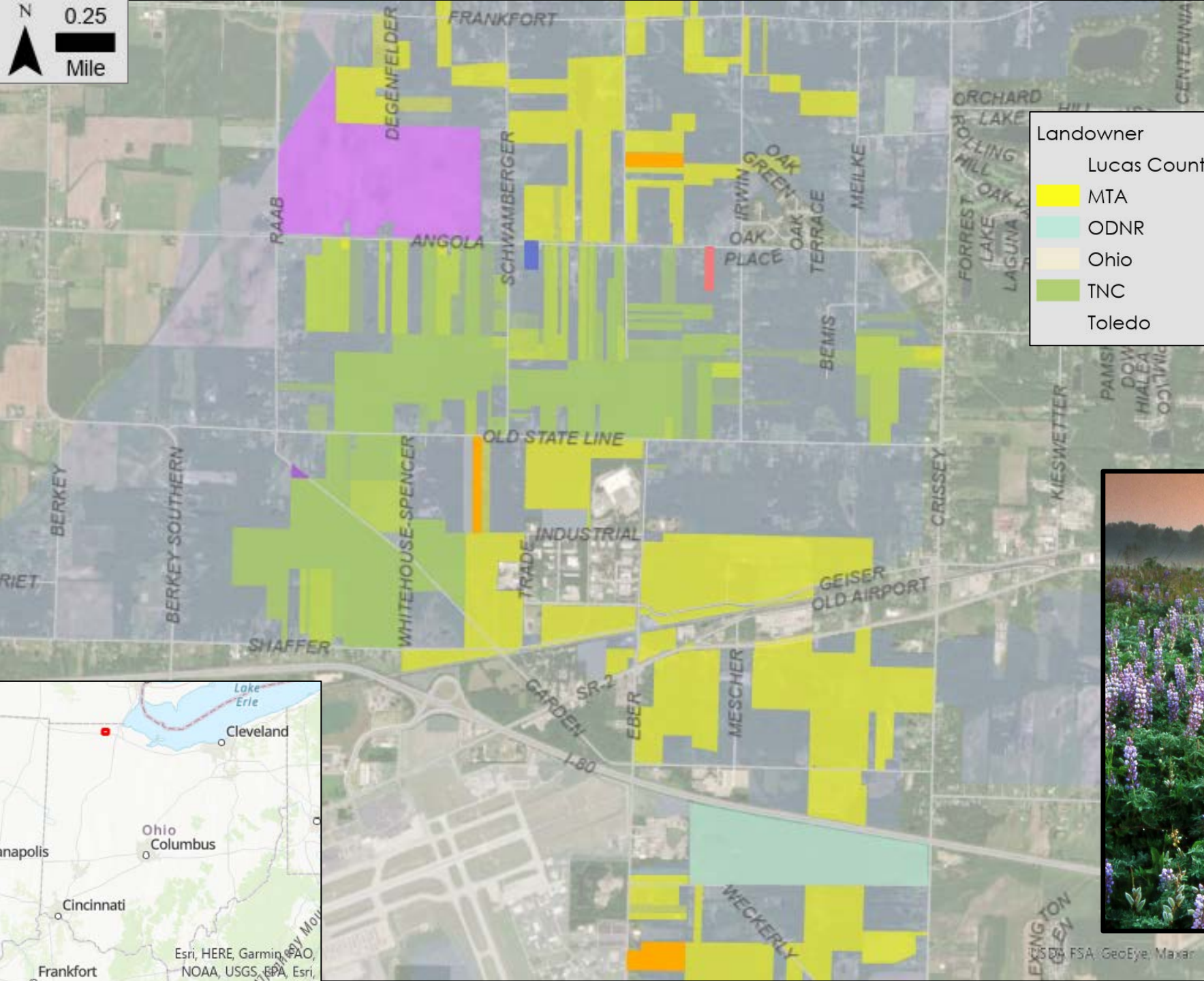
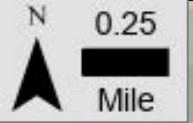
Great Lakes
RESTORATION



The Nature
Conservancy



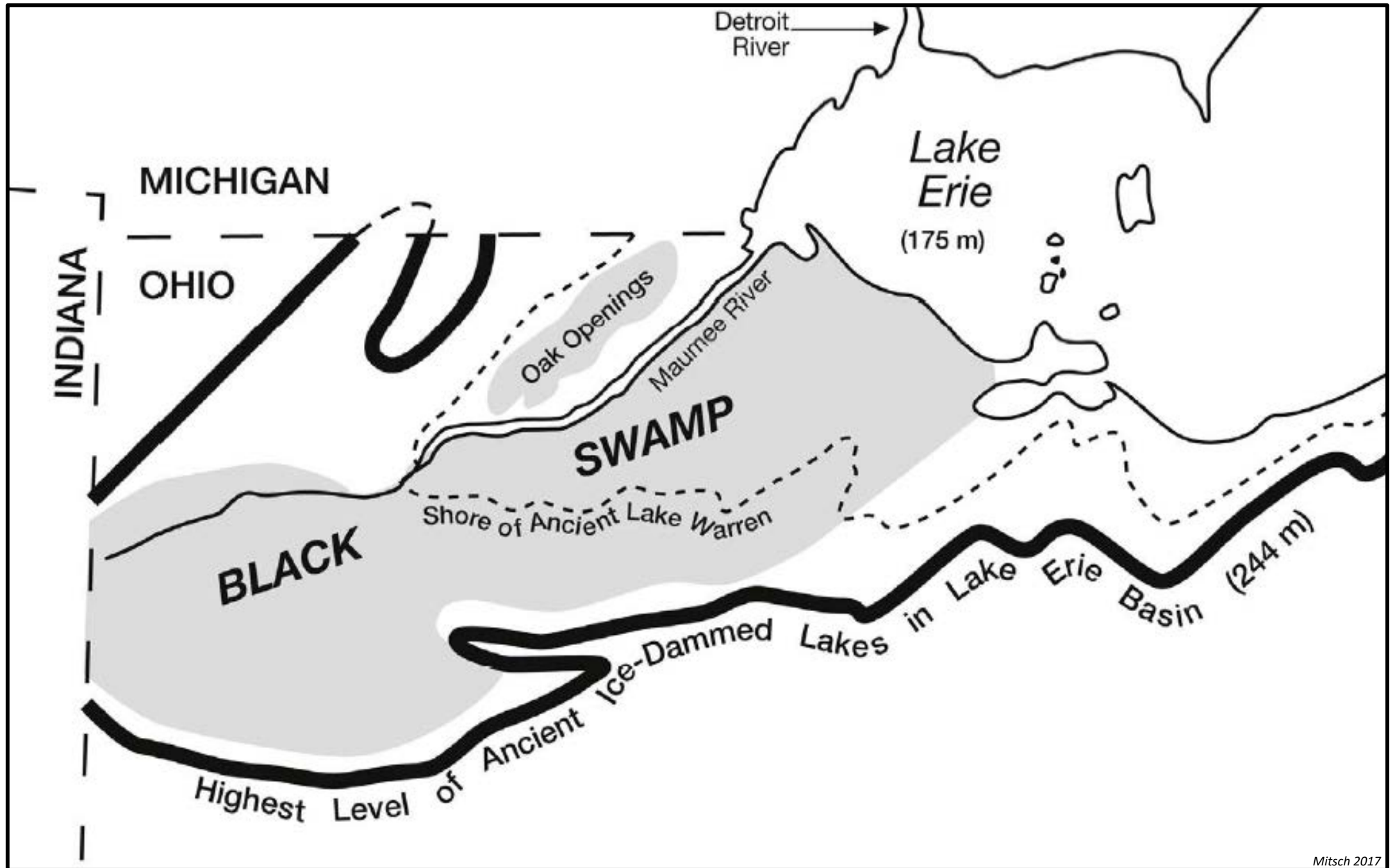
Alexis Sakas



Landowner		Priority Conservation Area	
Lucas County	MTA	Honey Do	Sandhill Crane Wetlands
ODNR	Ohio	Mousehouse	Perry
TNC	Toledo	MTA Acquisitions - D'Amore, Carter, Griswold	



© Andy Morrison



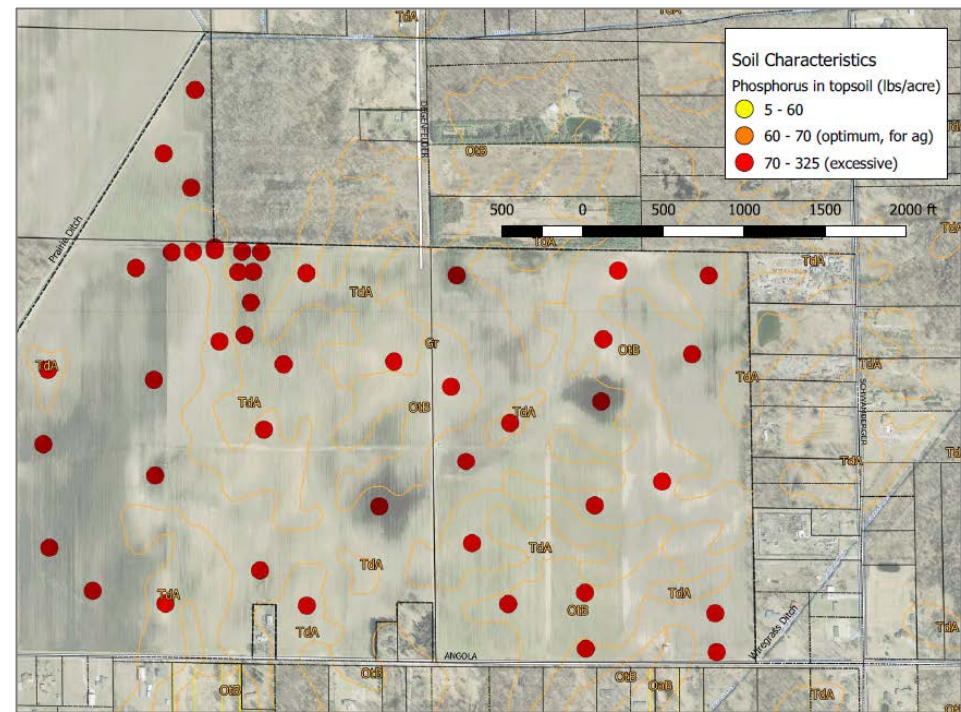
Sandhill Crane Wetlands





Restoration Approach

- Soil
- Flora







Restoration Approach

- Soil
- Flora
- Fauna
- Topography

© TNC



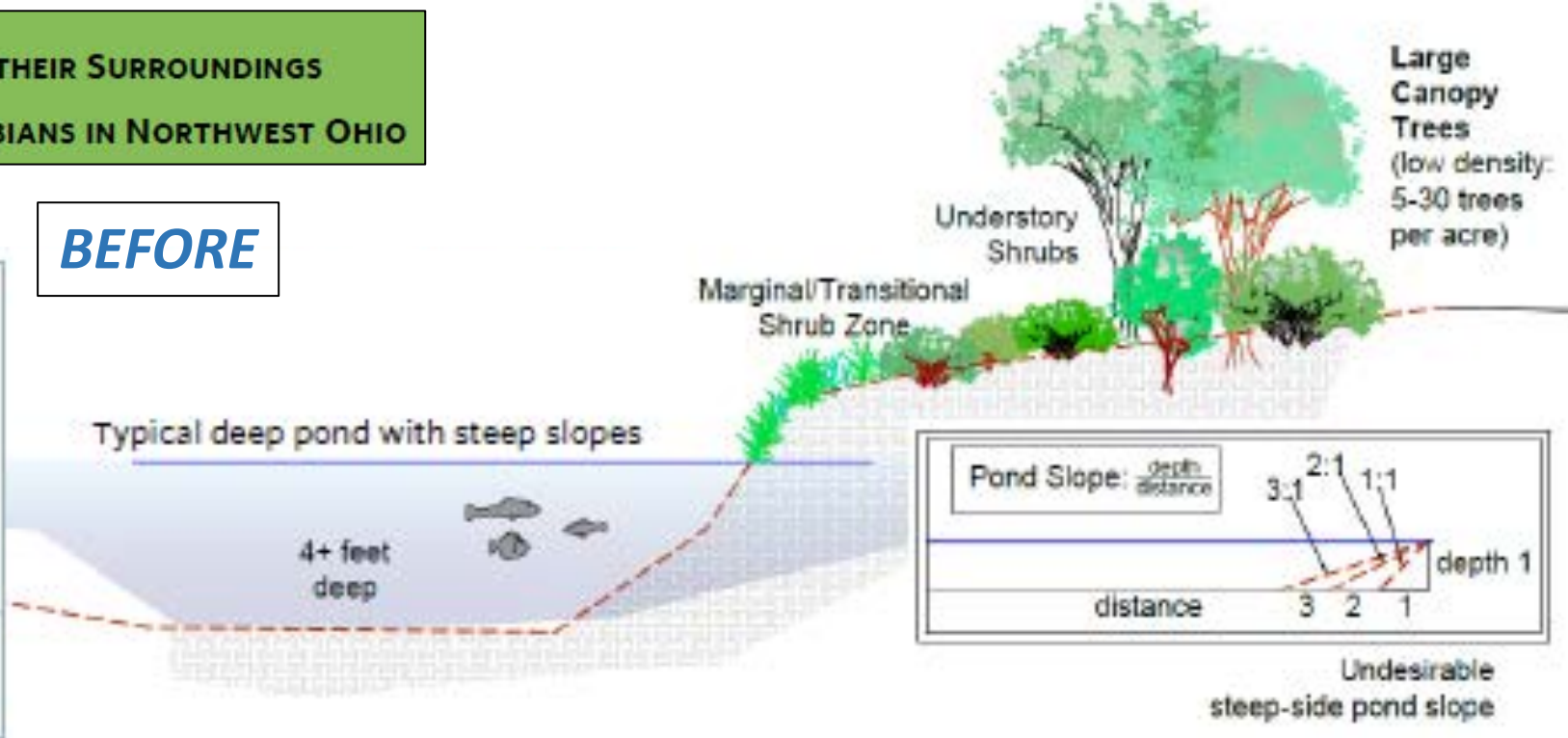
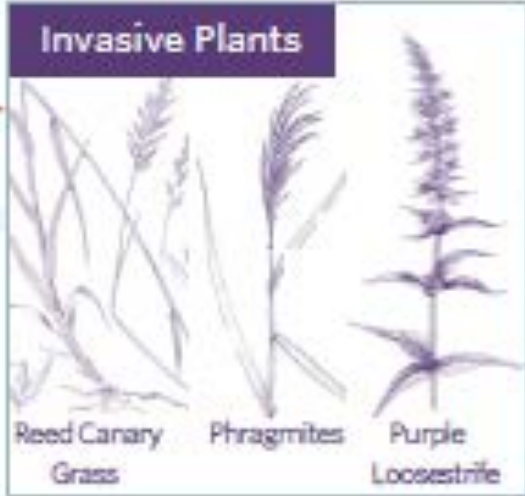
© Angie Cole



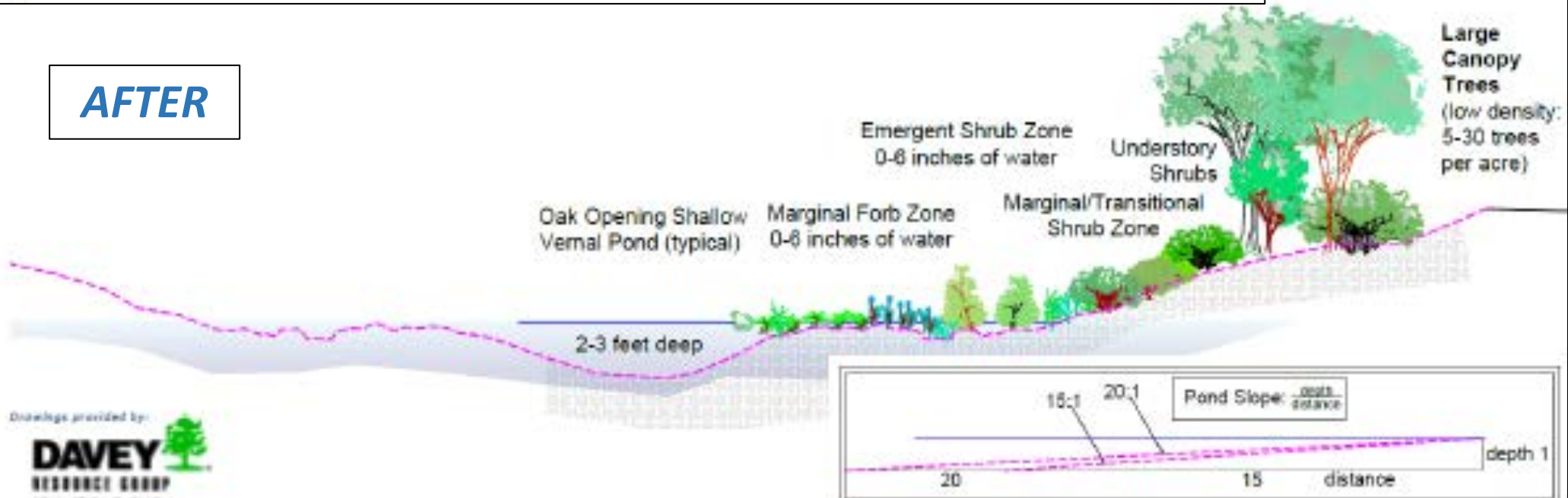


**MODIFYING PONDS AND THEIR SURROUNDINGS
TO BENEFIT BIRDS AND AMPHIBIANS IN NORTHWEST OHIO**

BEFORE

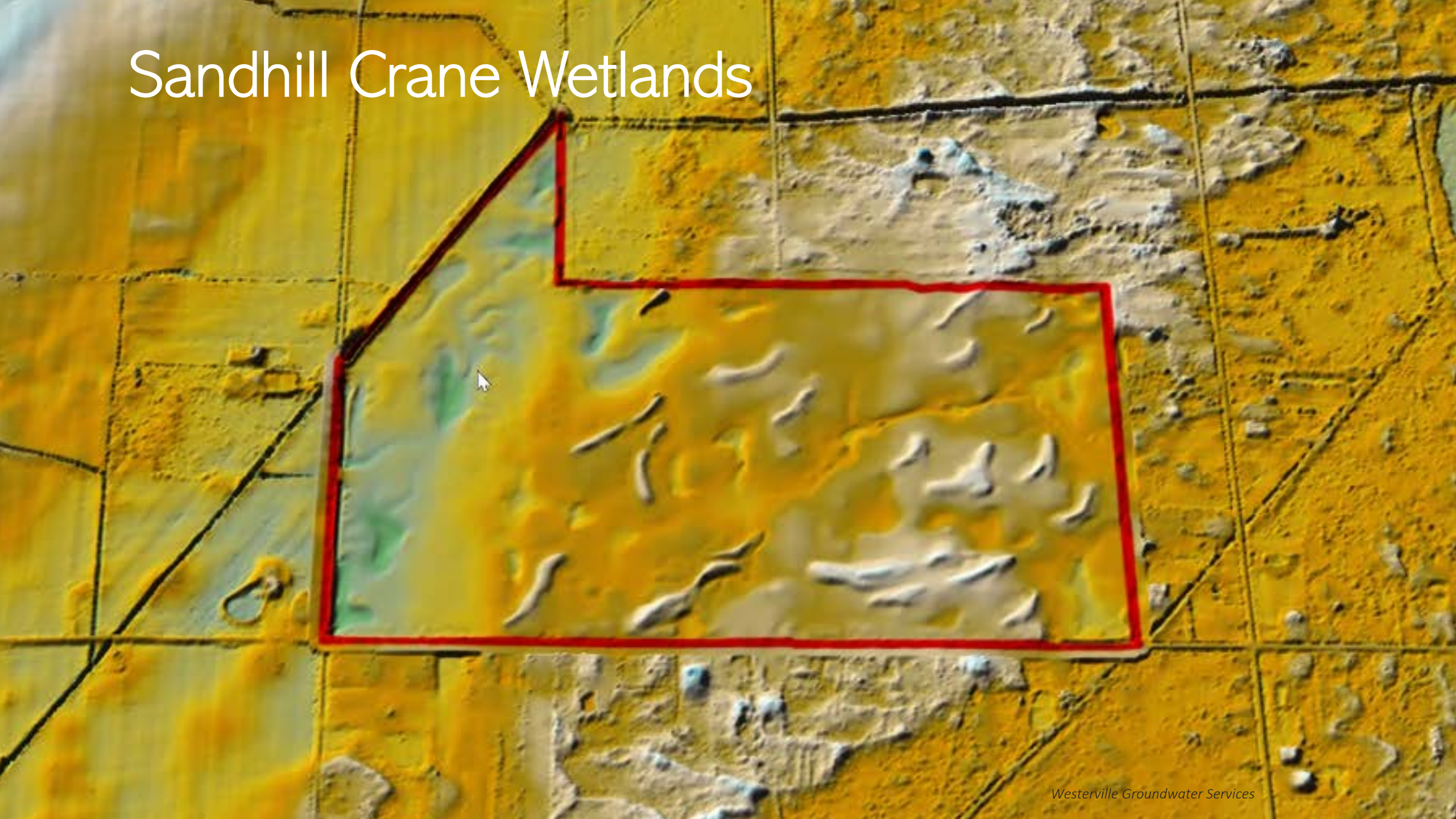


AFTER





Sandhill Crane Wetlands



Restoration Approach

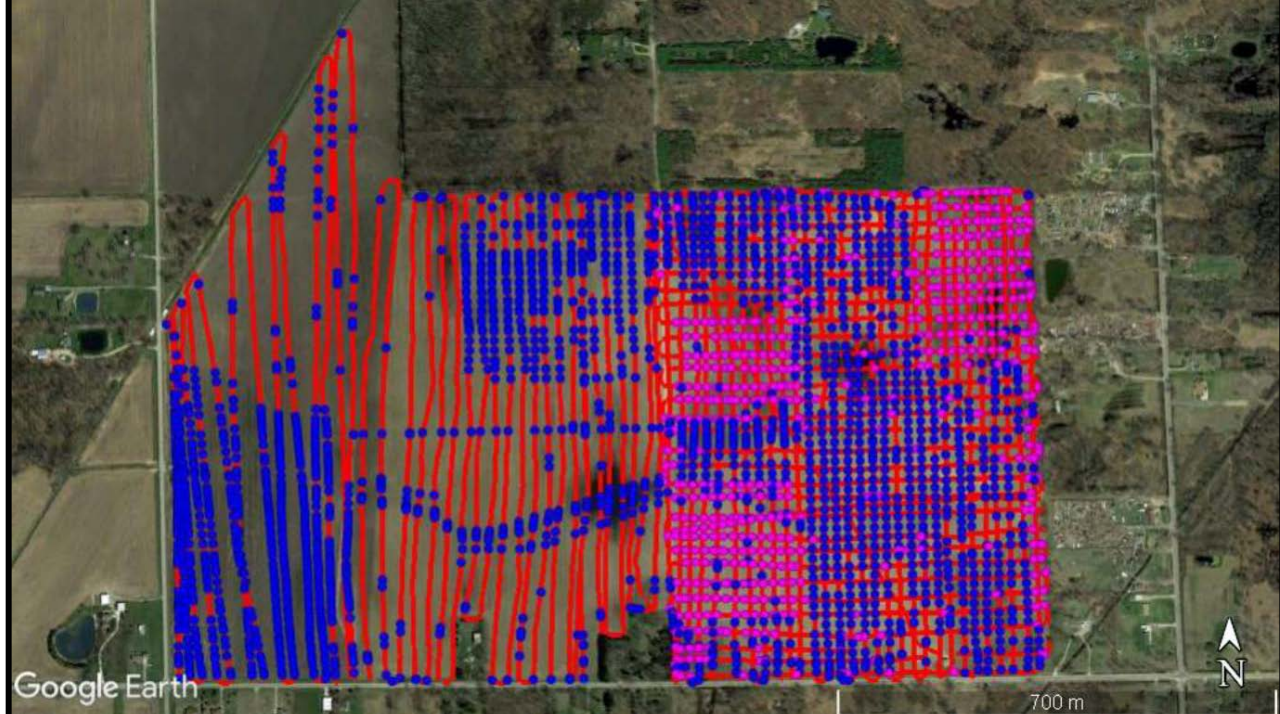
- Soil
- Flora
- Fauna
- Topography
- Hydrology



Hydrology Infrastructure

Ground penetrating radar

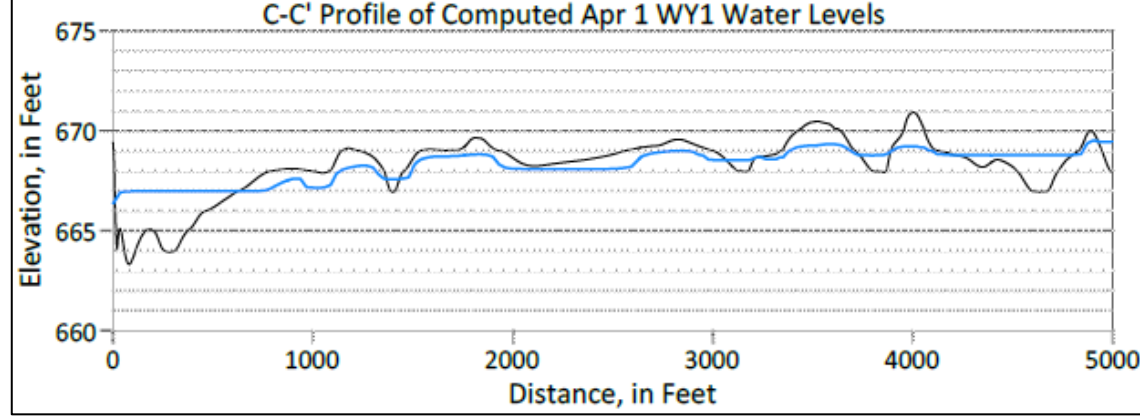
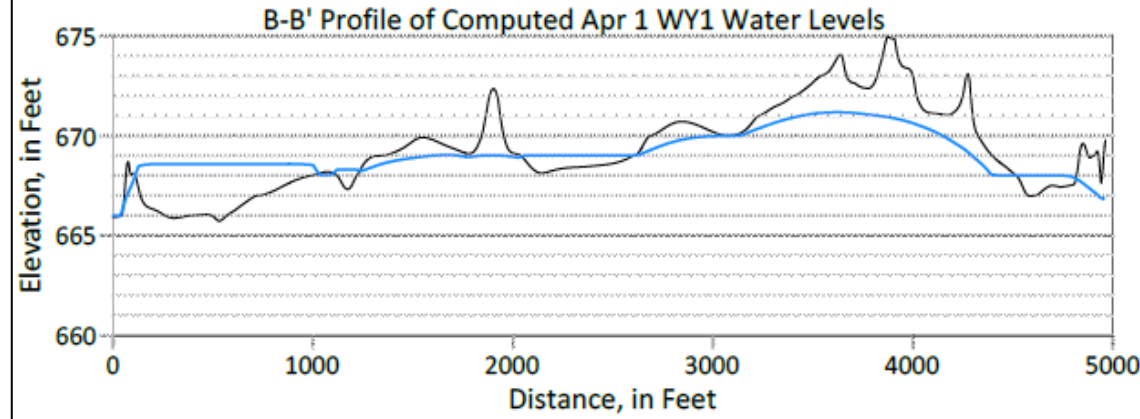
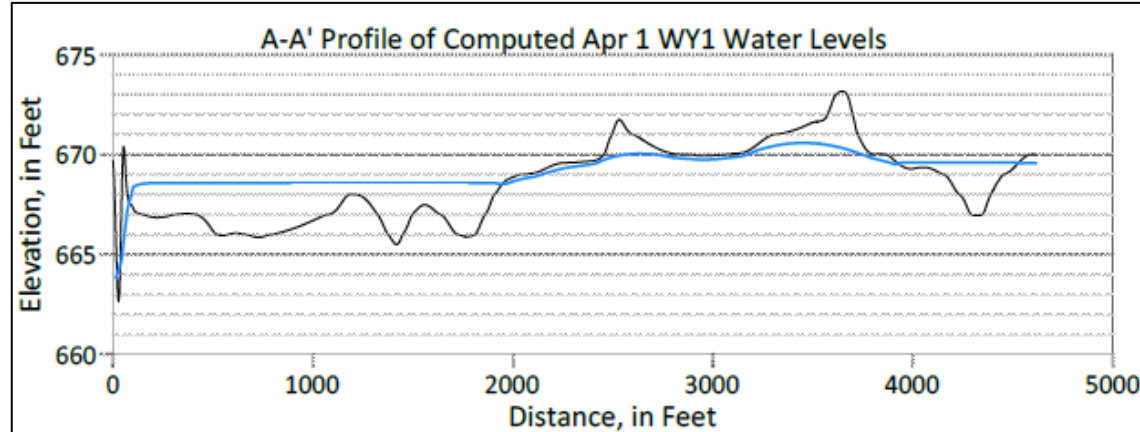
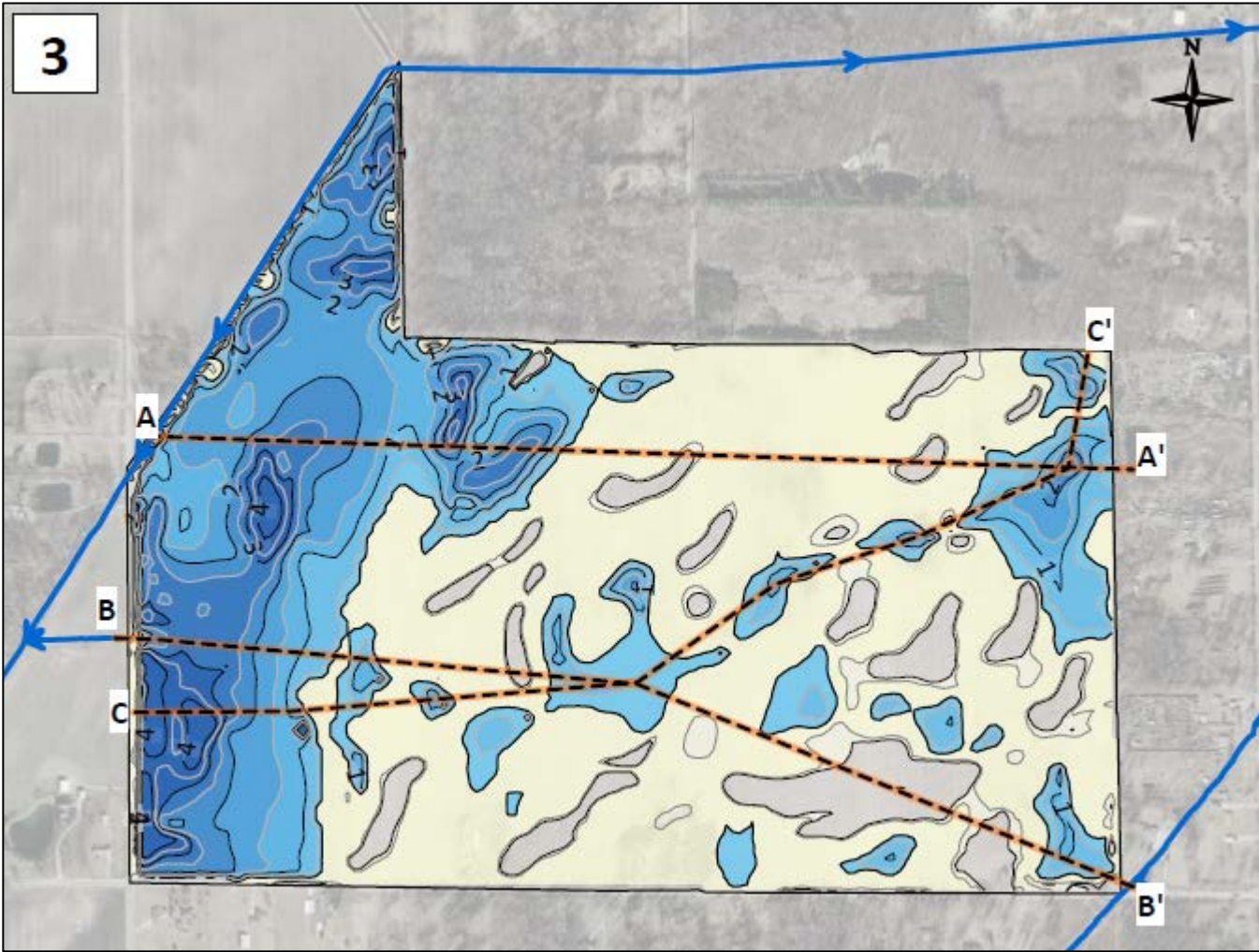
Transects & positive detections →→



Interpretation →→



Surface-water – Groundwater Model



On the 280 acres of **critical wet and upland prairie habitat** restored through this project...



>50 acres will be scraped to provide shallow depressions for aquatic species and emergent vegetation



30+ miles of agricultural drainage tile will be decommissioned



900 ac-ft of additional storm-water storage will be provided



200+ native species will be seeded



7,000 native saplings will be planted

Thanks!

alexis.sakas@tnc.org

419.867.1521 x 3240

